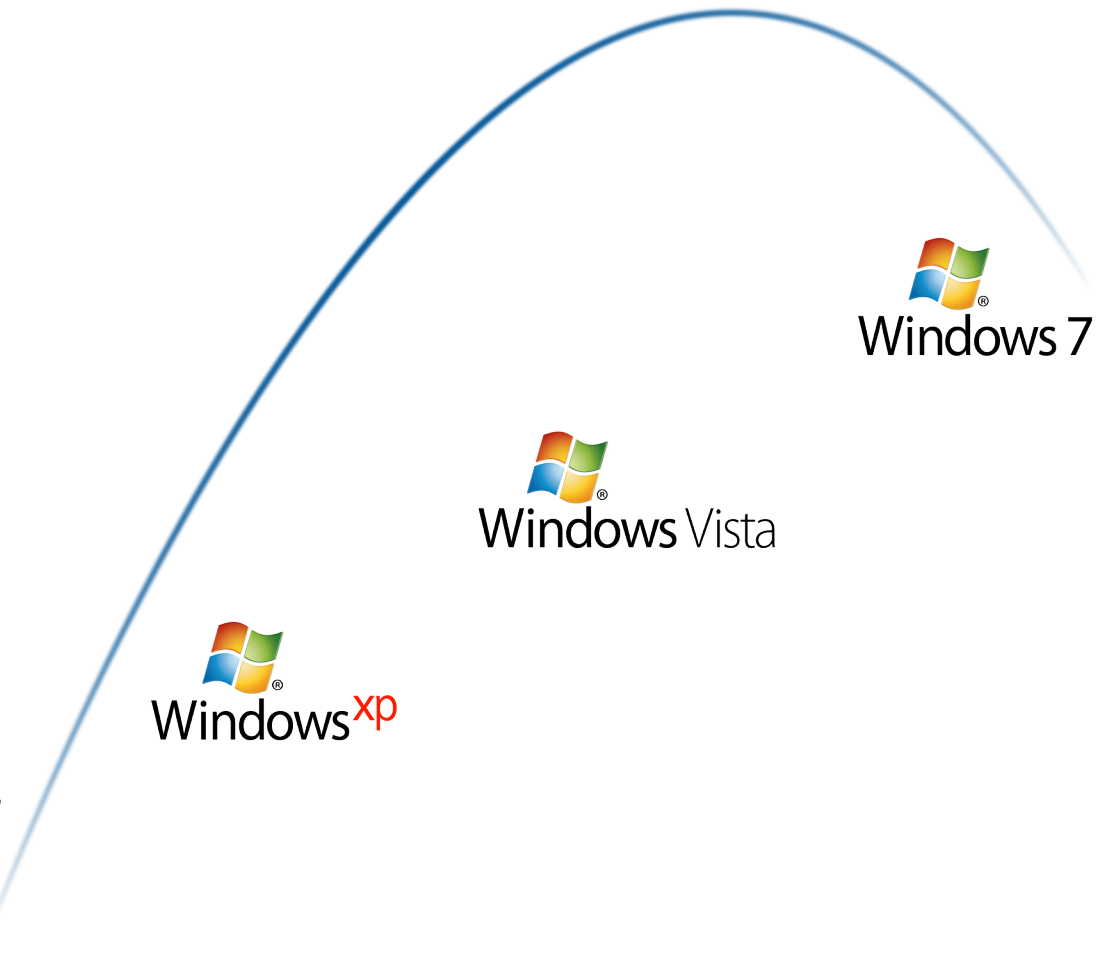


# PORTLOCK

## LEAP FROG

Creating a Bootable Windows VHD  
on a Bare-Metal System



  
Windows<sup>®</sup> xp

  
Windows Vista

  
Windows 7

# Creating a Bootable Windows VHD on a Bare-Metal System

**Date: December 22, 2009.**

Portlock Leap Frog provides features to setup a Windows 7, Windows Server 2008 R2 or Hyper-V Server 2008 R2 VHD Boot environment on a bare-metal system.

## System Requirements:

- 500 MB RAM Minimum, 1 GB Recommended
- 10 GB Free Disk Space

## Platform support for installing to VHD (32-bit & 64-bit)

- Windows 7 Ultimate/Enterprise
- Windows Server 2008 R2
- Hyper-V Server 2008 R2

## Quick Steps:

**Step 1:** Boot the system with the Portlock Leap Frog Boot CD.

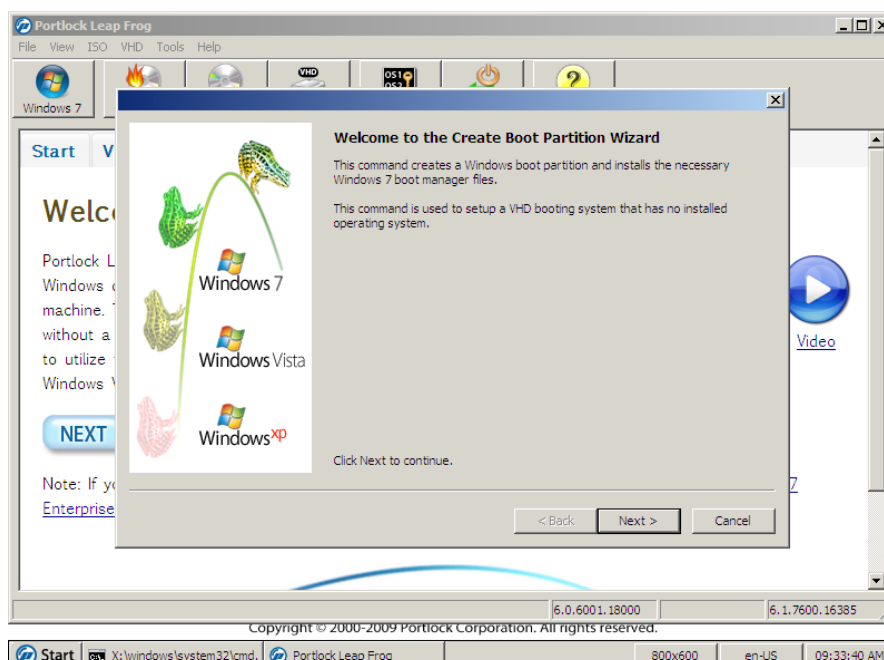
- Select “Tools > Download Optional ISO Package” to obtain the Portlock Leap Frog Boot CD

**Step 2:** Create a boot partition for the bare-metal system

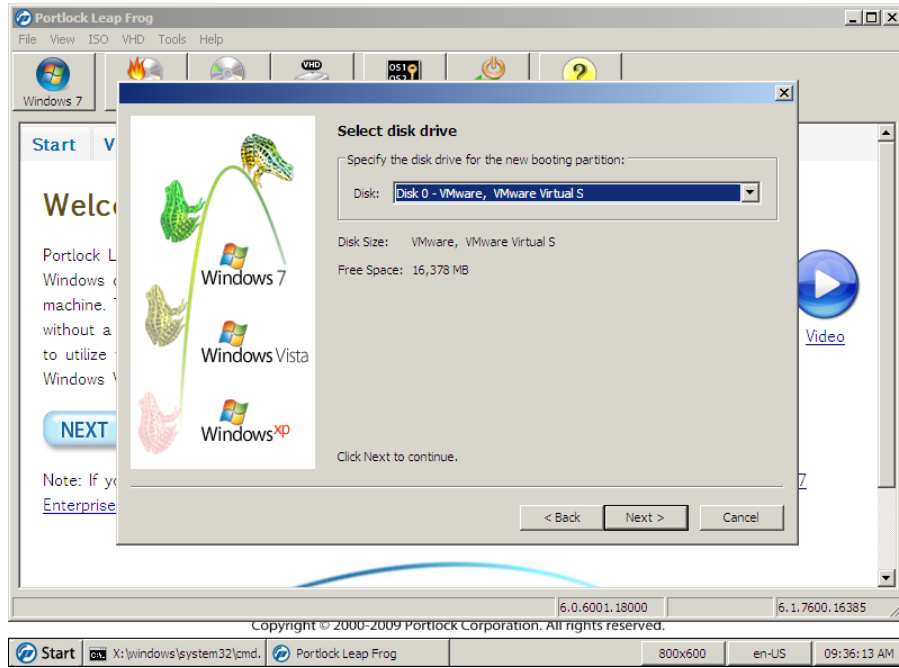
- Select “Tools > Create Boot Partition”

**Step 3:** From Portlock Leap Frog, click on the “Windows 7” button in the toolbar to create a bootable VHD.

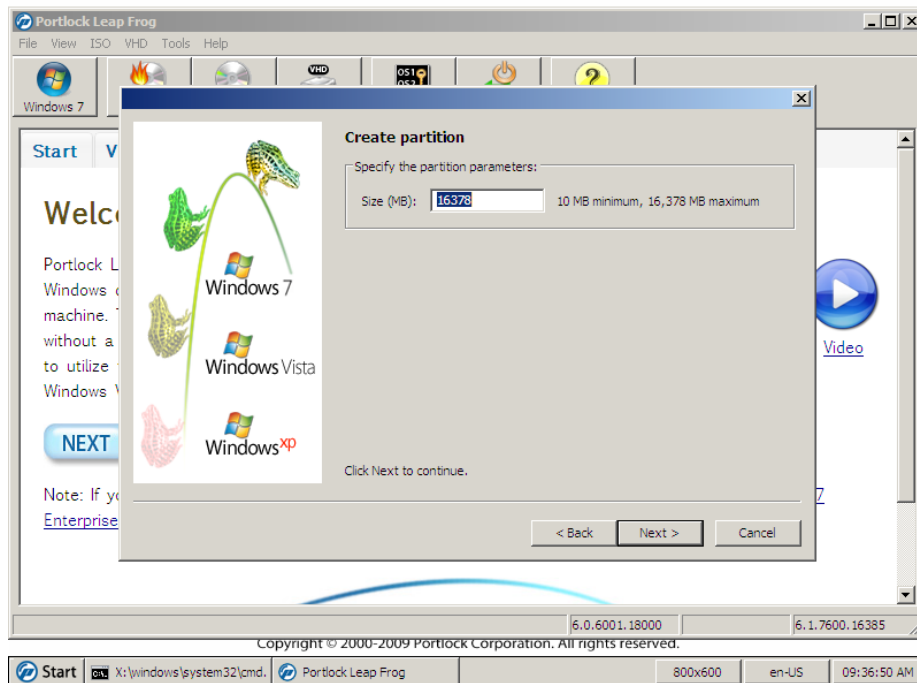
With the Portlock Leap Frog Boot CD up and running on the bare-metal system select “Tools > Create Boot Partition” as an NTFS file system is needed on the bare-metal system in order to create and assign VHDs. Select “Next” to continue.



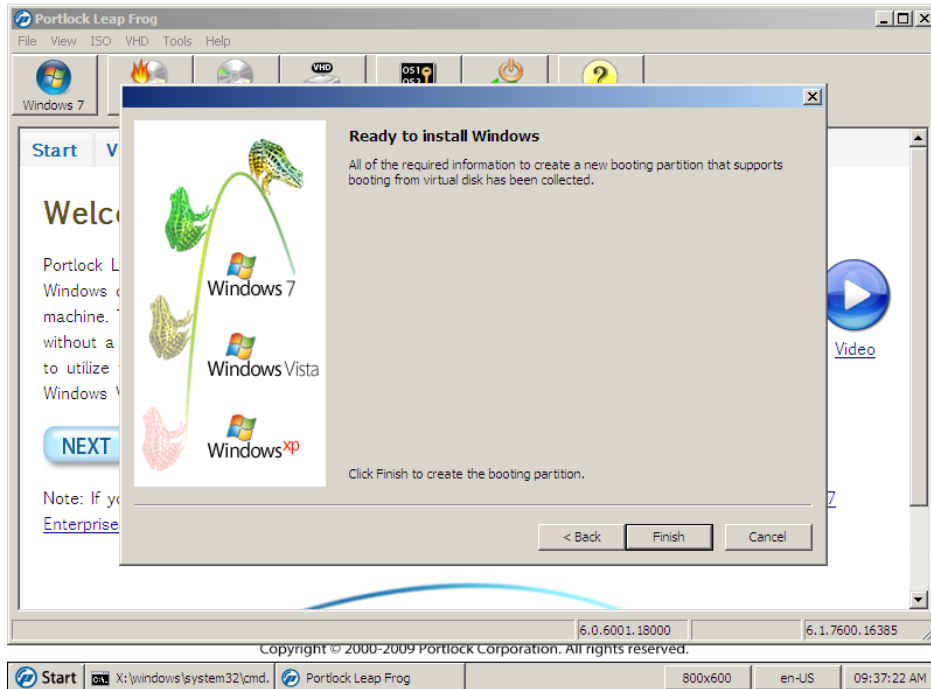
Specify the disk drive you wish to create the NTFS file system on, then select “Next” to continue.



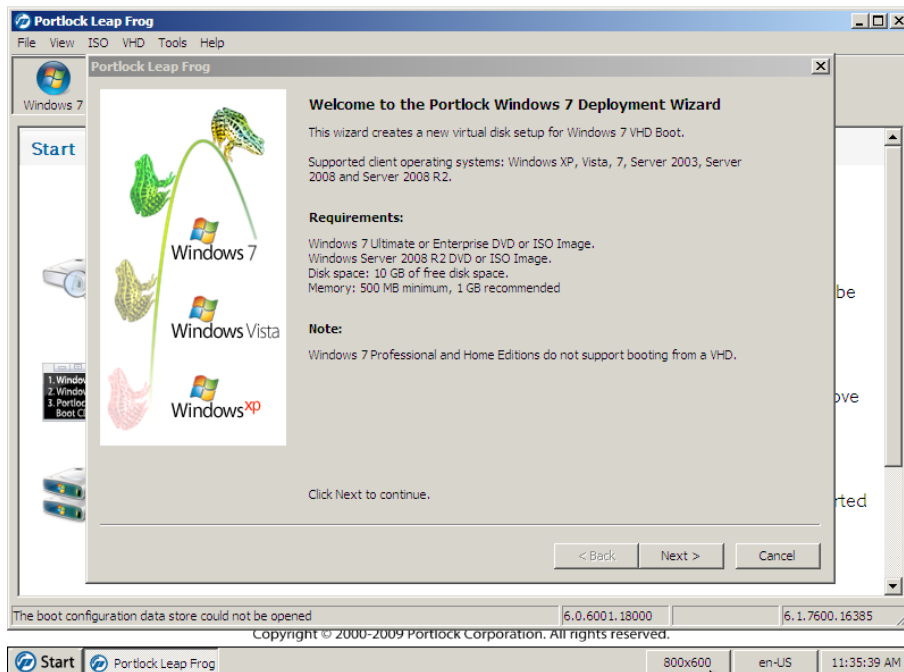
Next specify the size of the partition that will be created on the system, then select “Next” to continue.



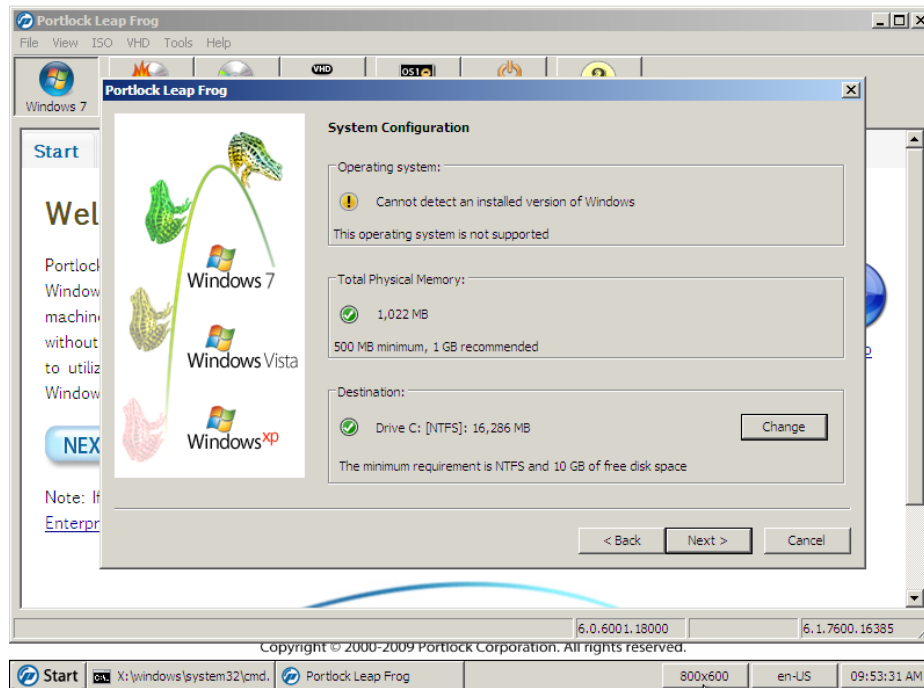
Once “Finish” is selected Portlock Leap Frog will create and format the NTFS file system for the bare-metal system.



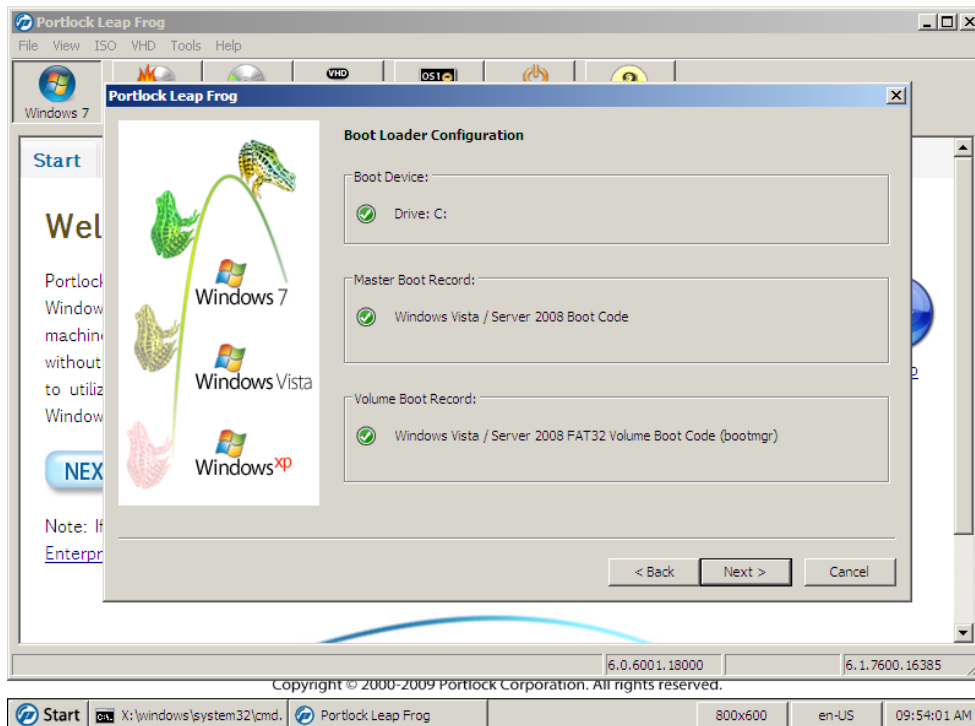
Start the Windows 7 Deployment Wizard by select the “Windows 7” icon at the top of Portlock Leap Frog or from the “VHD Boot” tab.



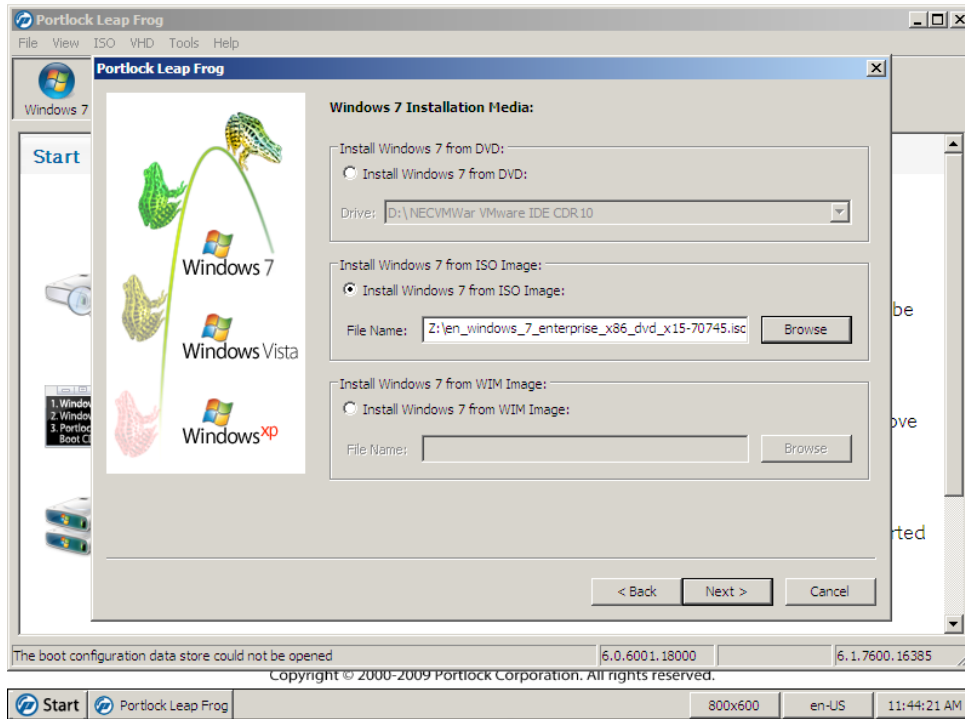
For the case where multiple partitions are present, select the “Change” button to alter the destination for the VHD. Select “Next” at the “System Configuration” dialog box shown below.



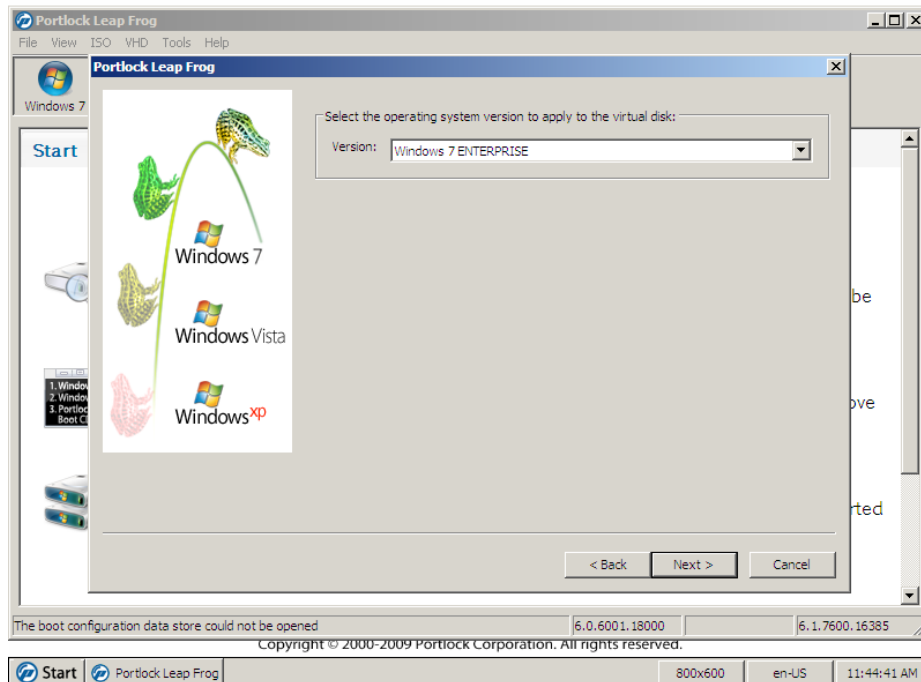
Select “Next” at the “Boot Loader Configuration” dialog box displayed below.



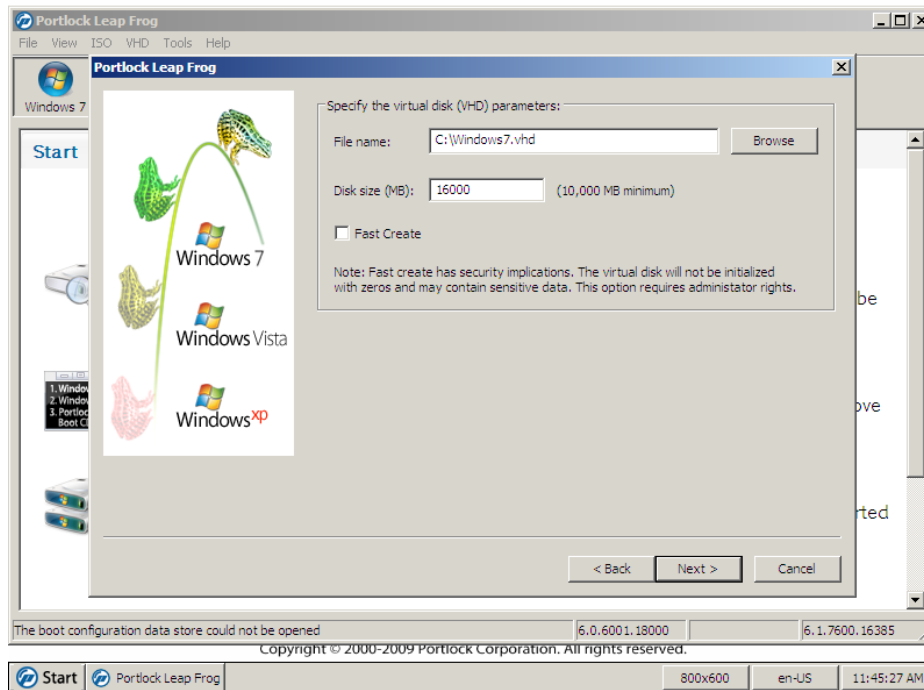
Navigate to the destination of the Windows 7 or Windows Server 2008 R2 media file. Optional media types include DVD, ISO and WIM images. The Portlock Leap Frog Boot CD also supports mapping a network drive for convenience.



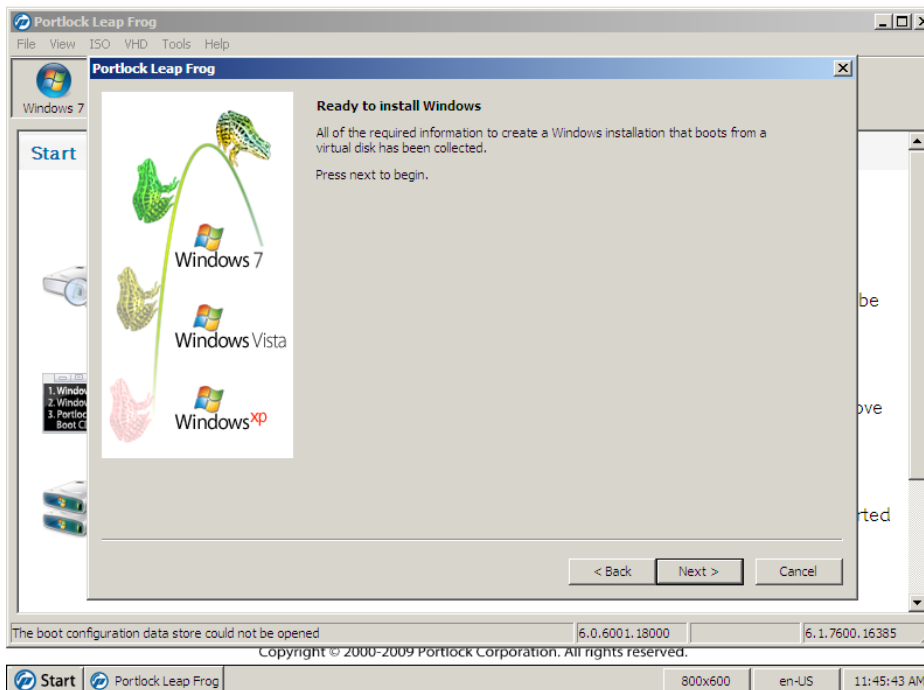
For some media types multiple versions of Windows will be displayed. Keep in mind that only Windows 7 Ultimate/Enterprise, Windows Server 2008 R2 and Windows Hyper-V Server 2008 R2 support bootable VHDs.



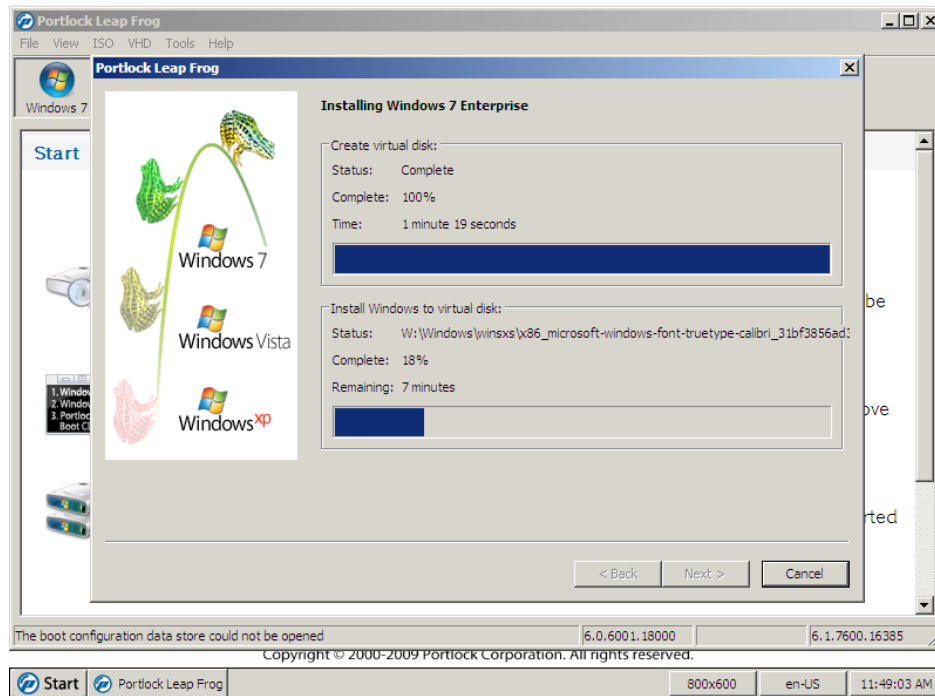
Next specify a file name and size for the VHD. There is also an option for “Fast Create,” however, keep in mind that this option has security implications.



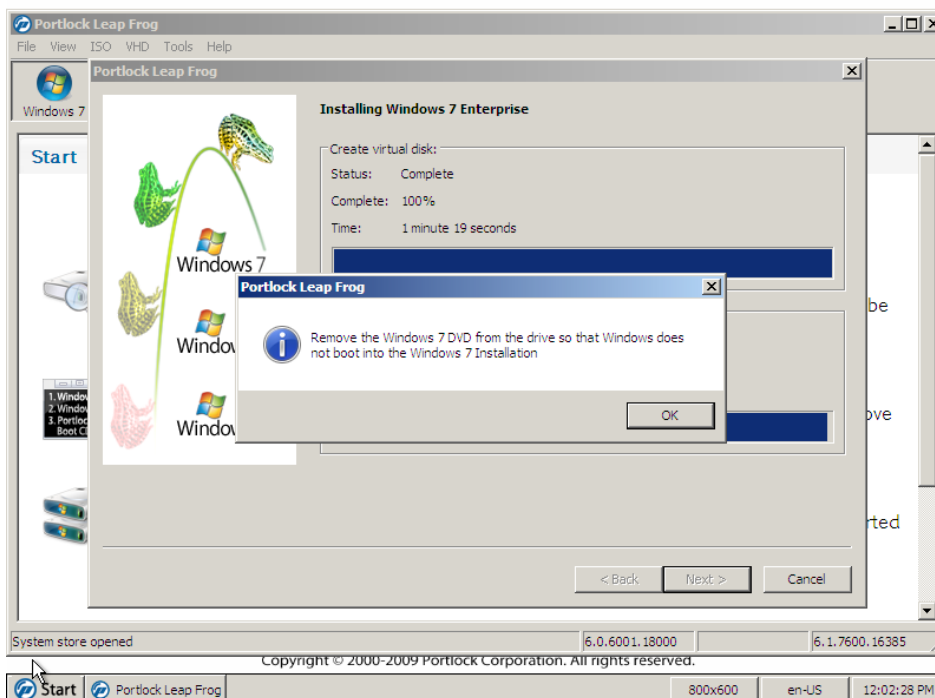
Now that all the required information has been gathered select “Next” to begin the creation of the bootable VHD.



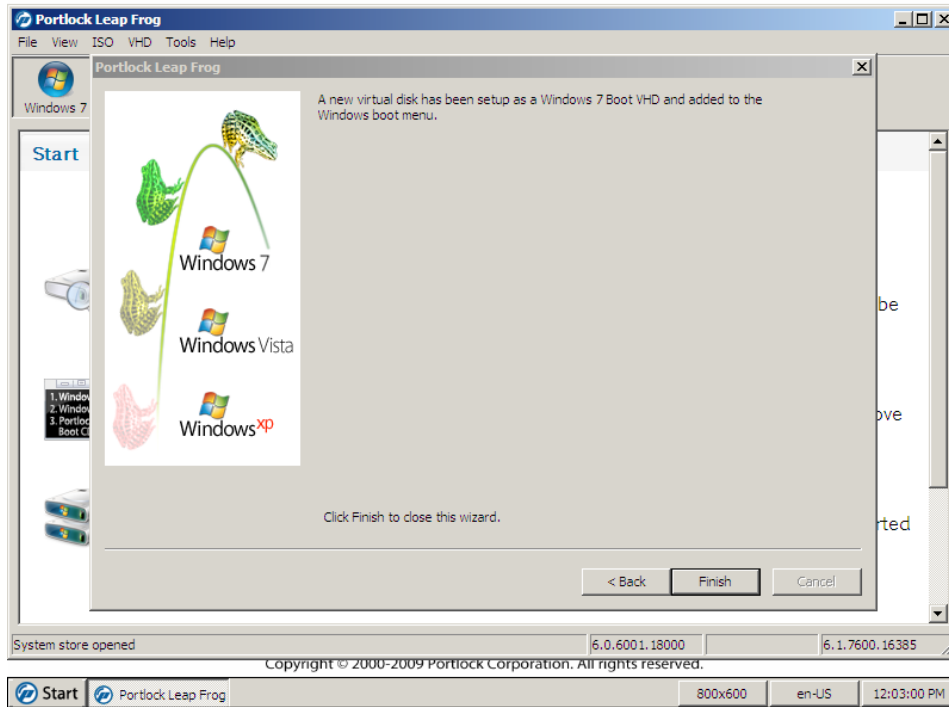
Once the virtual disk is created Portlock Leap Frog will automatically format an NTFS file system for the newly created VHD.



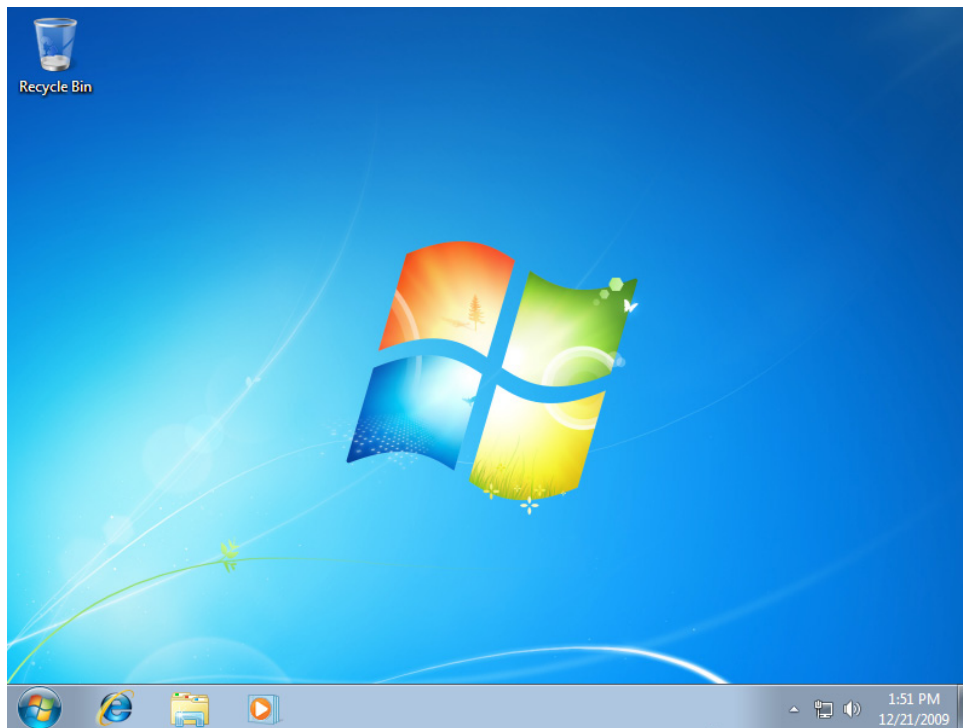
Once the process is complete you will be asked to remove the Windows DVD so that Windows does not boot into the Windows 7 installation upon rebooting the system.



Select "Finish" to close the wizard. All that is left to do is to reboot the system into the VHD for the first time. The Portlock Leap Frog Boot CD can be shutdown by select "Start > Shutdown."



Upon booting the VHD for the first time Windows will need to edit the registry settings, install devices as well as setup Windows for first time use.



**See Also:**

[http://www.portlock.com/products/documentation/en\\_US/LeapFrog.pdf](http://www.portlock.com/products/documentation/en_US/LeapFrog.pdf)

[http://www.portlock.com/products/leap\\_frog/limitations.aspx](http://www.portlock.com/products/leap_frog/limitations.aspx)

[http://www.portlock.com/support/knowledge\\_base/download\\_windows\\_7\\_vhd.aspx](http://www.portlock.com/support/knowledge_base/download_windows_7_vhd.aspx)

[http://www.portlock.com/support/knowledge\\_base/download\\_windows\\_server\\_2008\\_r2\\_vhd.aspx](http://www.portlock.com/support/knowledge_base/download_windows_server_2008_r2_vhd.aspx)

— End of document —