

# **PORTLOCK**

## **LICENSE MANAGER**

**Adding WIM image support  
to Windows XP and Windows Vista**



## License agreement

Portlock License Manager is furnished under a License Agreement and may be used only in accordance with the terms of the agreement.

**Date of Publication:** April 27, 2009

**NO WARRANTY.** The technical documentation is being delivered to you AS IS and Portlock Corporation makes no warranty as to its accuracy or use. Any use of the technical documentation or the information contained therein is at the risk of the user. Documentation may include technical errors, typographical errors or other inaccuracies. Portlock reserves the right to make changes without prior notice.

All technical documentation is the copyrighted work of Portlock Corporation. No part of this publication may be copied without the express written permission of Portlock Corporation, 8353 154th Avenue NE, Redmond, WA 98052.

Copyright 2000-2009 Portlock Corporation. All Rights Reserved. Portlock, the Portlock logo, Portlock License Manager, Portlock SMART Suite for Windows, Portlock Storage Manager and Portlock Boot CD for NetWare are trademarks of Portlock Corporation.

Other vendor product names mentioned in this guide may be trademarks or registered trademarks of their respective companies and are hereby acknowledged. Printed in the United States.

## Adding WIM image support to Windows XP and Windows Vista

New in Portlock License Manager version 5.11.0.1627, released April 27th, 2009, is support for the Windows Image Format (WIM). WIM images can be mounted, exported, modified and dismounted.

The purpose of this document is to demonstrate a quick method of downloading the Windows Automated Installation Kit (WAIK) and extract the files that are needed for Portlock License Manager to support WIM images and to install to a system without burning the WAIK ISO image to disc or installing the entire WAIK package.

### Step One

Create a library in Portlock License Manager for the WAIK to be downloaded to. There are several ways to create a library – from the Portlock License Manager menu, select **ISO > Create ISO Library**, or right-click on ISO Library in the left-hand pane and select **Create ISO Library**.

When prompted, name the Library “Windows Vista SP1 AIK.” The library will be displayed in the left-hand pane as shown below (outlined in red).

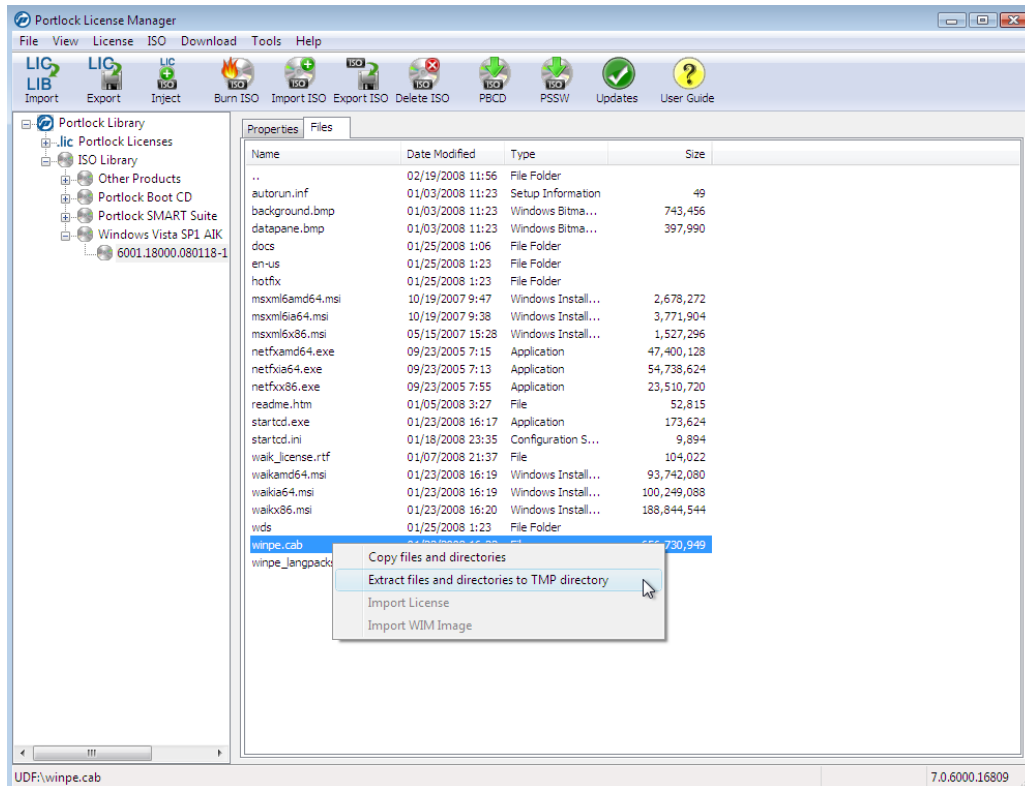
Once the library has been created, download the [Windows Vista SP1 AIK](#) and save it to the same location that the library was created in. Portlock License Manager creates libraries by default in “C:\Program Files\Portlock\Portlock License Manager”.

**Note:** If the WAIK has been saved to a custom location, import the ISO into Portlock License Manager after the Library has been created. To import an ISO, select **ISO > Import ISO Image** from the menu and select the newly created library.



## Step Two

With the WAIK ISO selected in the ISO Library, select the “Files” tab in the right-hand pane. Here all the files within this ISO are displayed. To extract the necessary files needed by Windows XP/Vista for WIM support in Portlock License Manager, right-click on the file “winpe.cab,” displayed in the red box below, and choose to “Extract Files and directories to a TMP directory.”



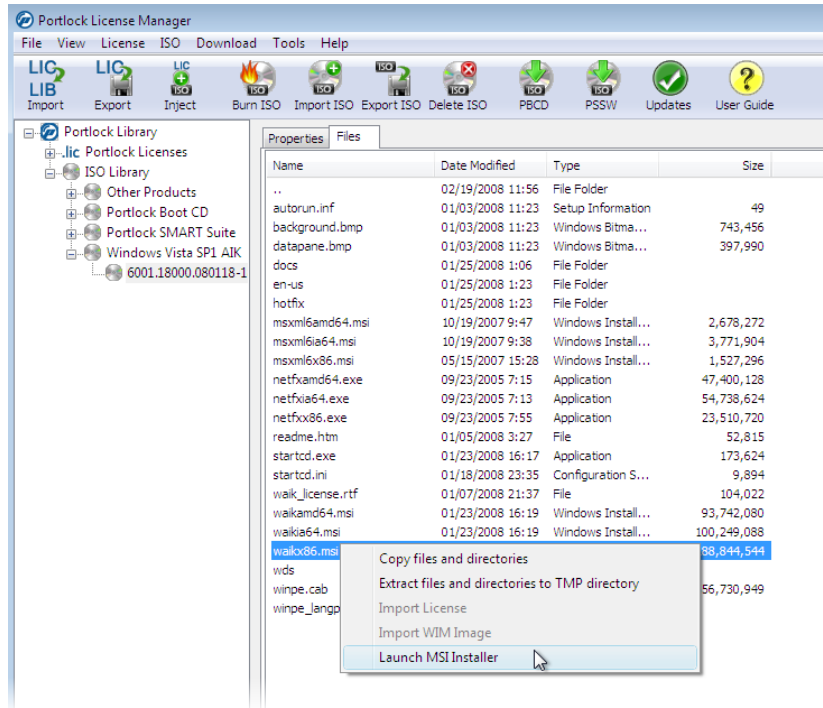
These files are extracted to a directory called “Temp” in the Library base directory. To confirm the path of this directory, go to File > Properties. Once the files are extracted, the “Temp” directory window should appear. These files are needed for the next step.



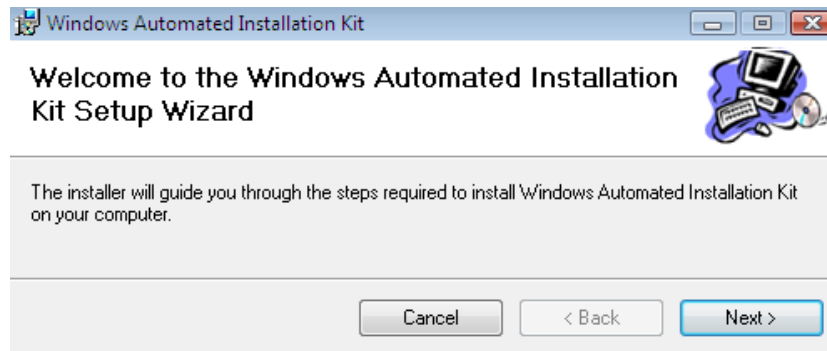
## Step Three

Next we will launch the MSI installed for the specified platform. For a 32-bit Windows system, right-click on the file “waikx86.msi” and choose “Launch MSI Installer.” For 64-bit Windows systems, right-click on the file “waikamd64.msi” and choose “Launch MSI Installer.” The MSI will be copied to Portlock License Manager “Temp” directory and then executed.

**Note:** For some systems, the files “netfx86.exe” and “msxml6x86.msi” will need to be installed before the WAIK MSI file is executed. For example, Windows XP with .NET 2.0. This can be accomplished with the same method. Right-click on these files and extract or launch MSI installer.

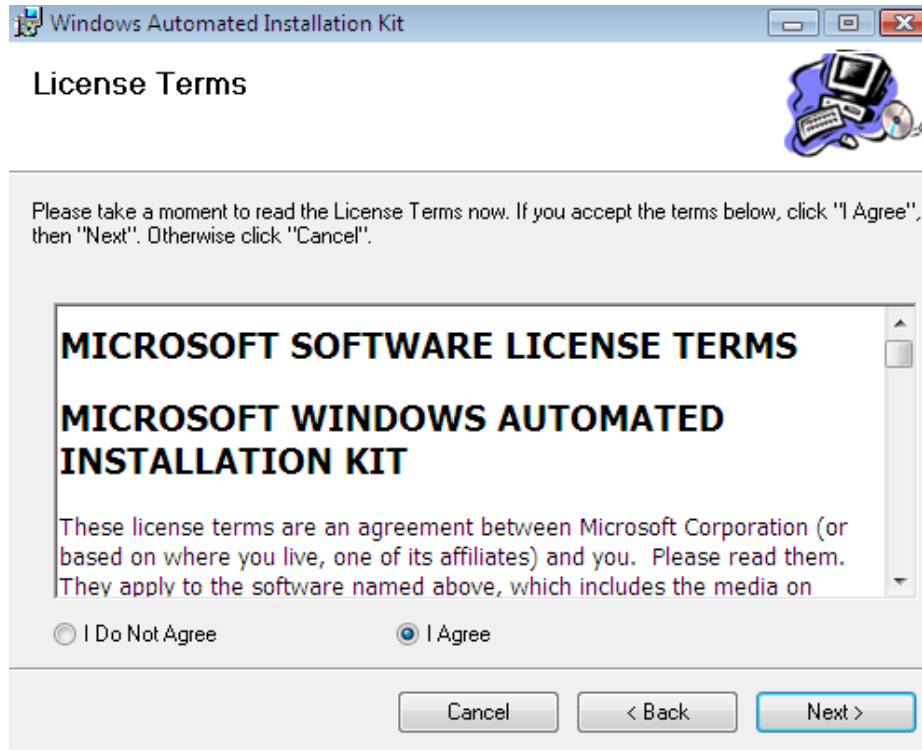


After launching the MSI, the “Windows Automated Installation Kit Setup Wizard” will appear. This will walk you through installing WAIK to the system, which is required by Portlock License Manager for WIM support on Windows XP and Windows Vista.

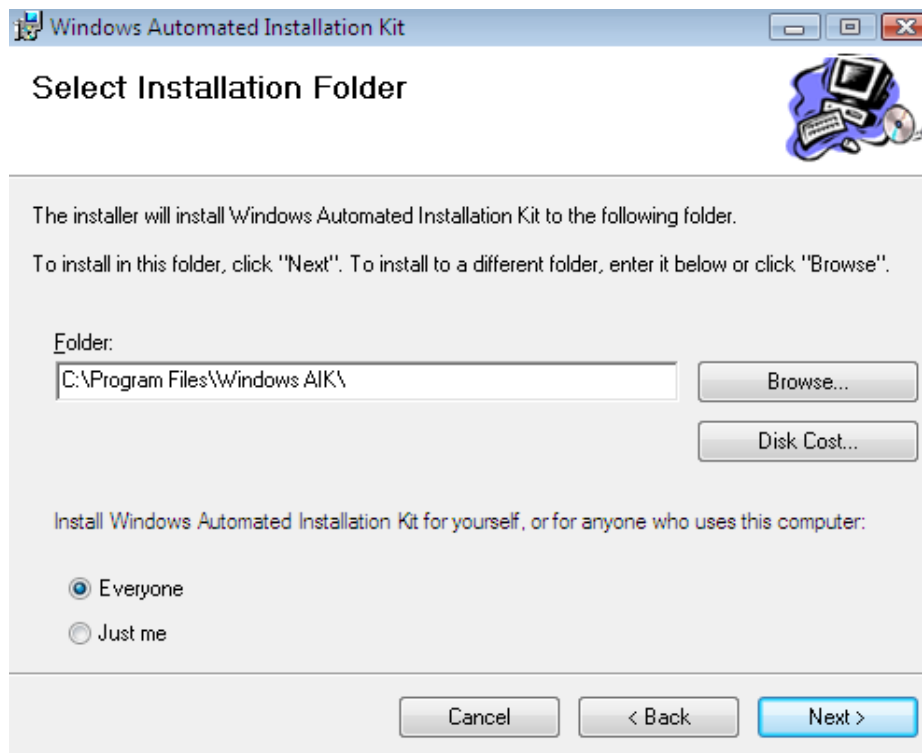




## Step Three (continued)



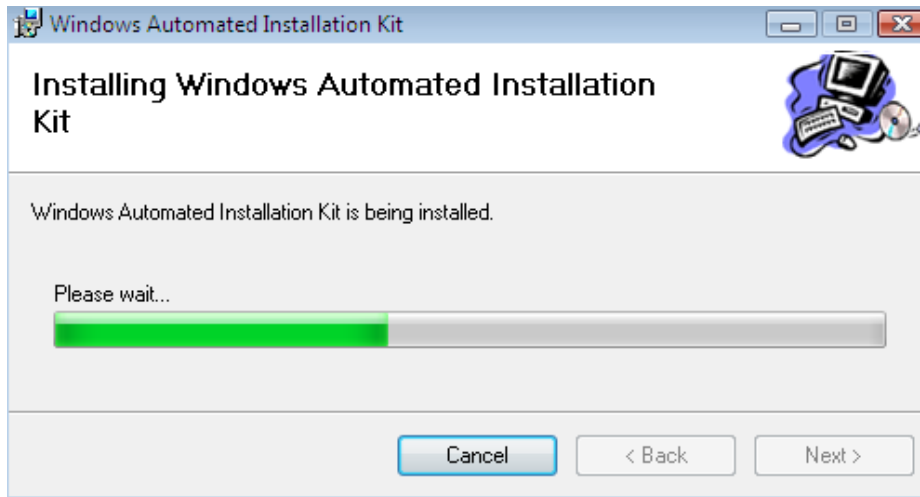
The default path for the WAIK installation is "C:\Program Files\Windows AIK". This path can be change to any preferred folder. For most cases it is recommended to keep the default location.



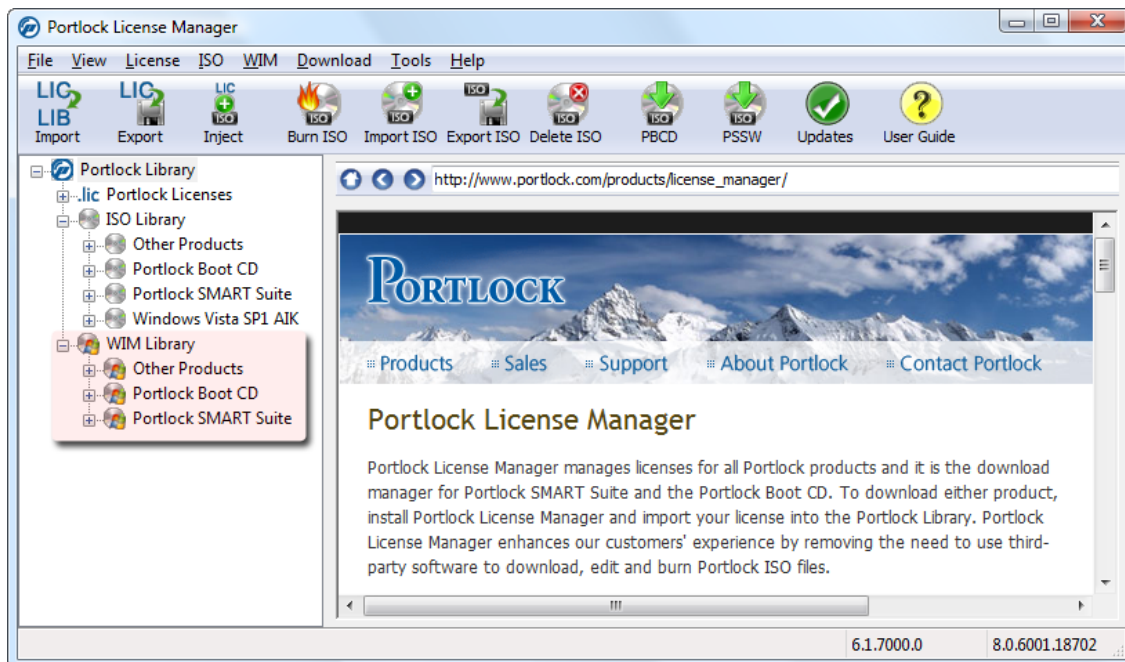
## Step Three (continued)

The installation of the Windows Automated Installation Kit will take a few minutes. Once finished, WIM support can be utilized from Windows Vista or Windows XP.

**Note:** Windows 7 users are not required to install WAIK.



With WAIK installed and with WIM support enabled, the WIM Library will exist in the left hand pane as shown below. WIM support can be enabled from **File > Properties > WIM Support**.





— End of document —